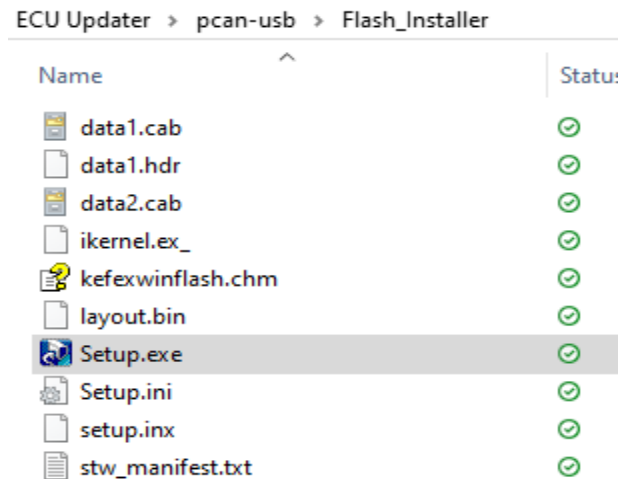
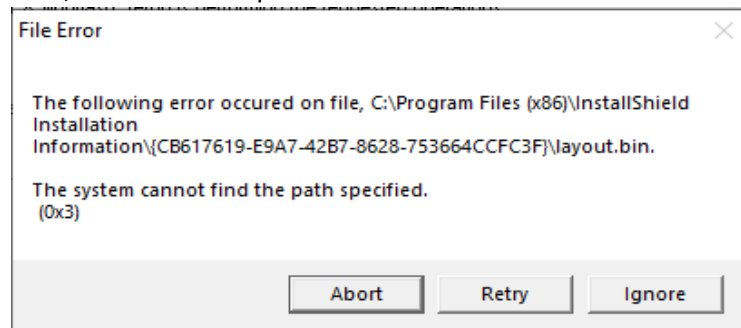


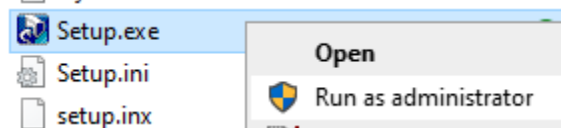
1. If the installer did not automatically launch, start it manually by going to the ECU Updater folder then pcan-usb\Flash\_Installer and double clicking Setup.exe.



2. Click Next on the InstallShield Wizard screen.
3. Click Next.
4. Click Yes.
5. Click Next.
6. In Setup Type, ensure Typical is selected and click Next.
7. If you see the Error shown below, click Abort and exit the installation process. Then follow sets a-c below. Otherwise, continue to step 8.



- a. Find Setup.exe described in step 1.
- b. Right click on it and select Run as administrator



- c. Return to step 2.
8. In Setup Type, ensure that PEAK-Systems is selected and click Next.
  9. Click Yes on the popup.
  10. Click OK on the popup.
  11. Click Next on the PEAK CAN Driver Installation screen.
  12. Accept the License Agreement and click Next.
  13. Continue to click Next until the installation is complete.

14. Click Finish to close the PEAK CAN Driver Installation screen.
15. Ensure PCAN USB is selected and click Next.
16. Click Next.
17. Click OK on the Installation Complete Popup.

The CAN driver installation is now complete. Continue updating the ECU software.